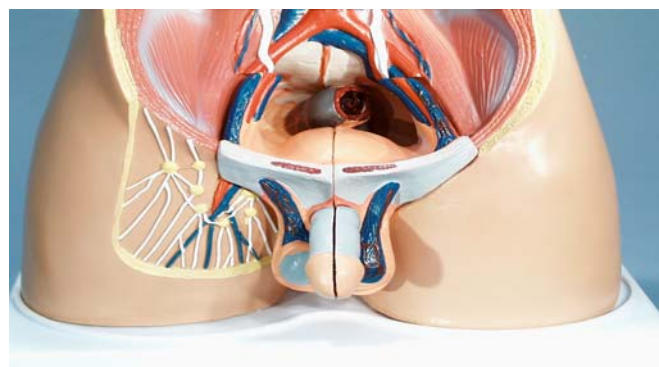
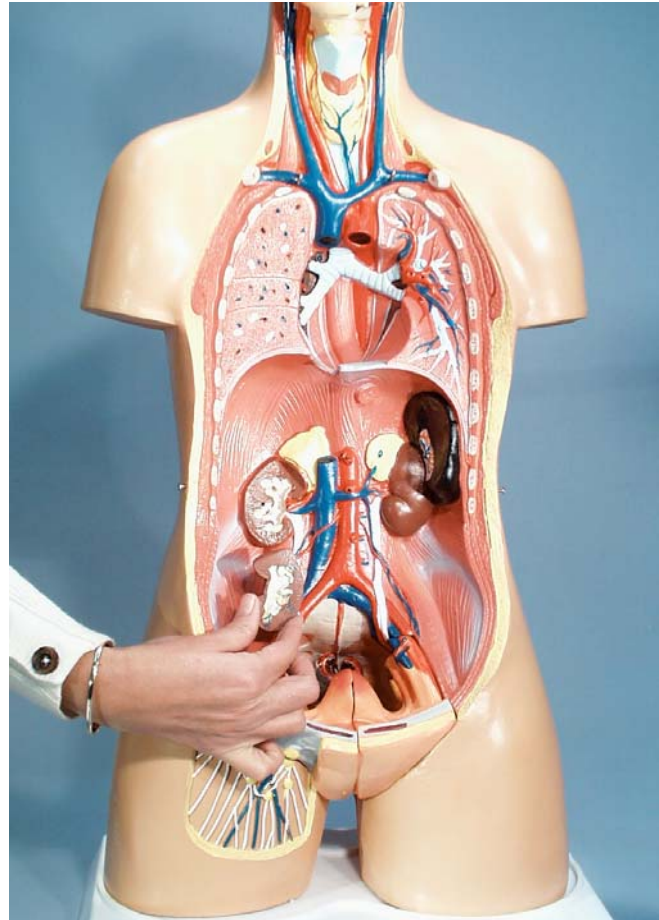
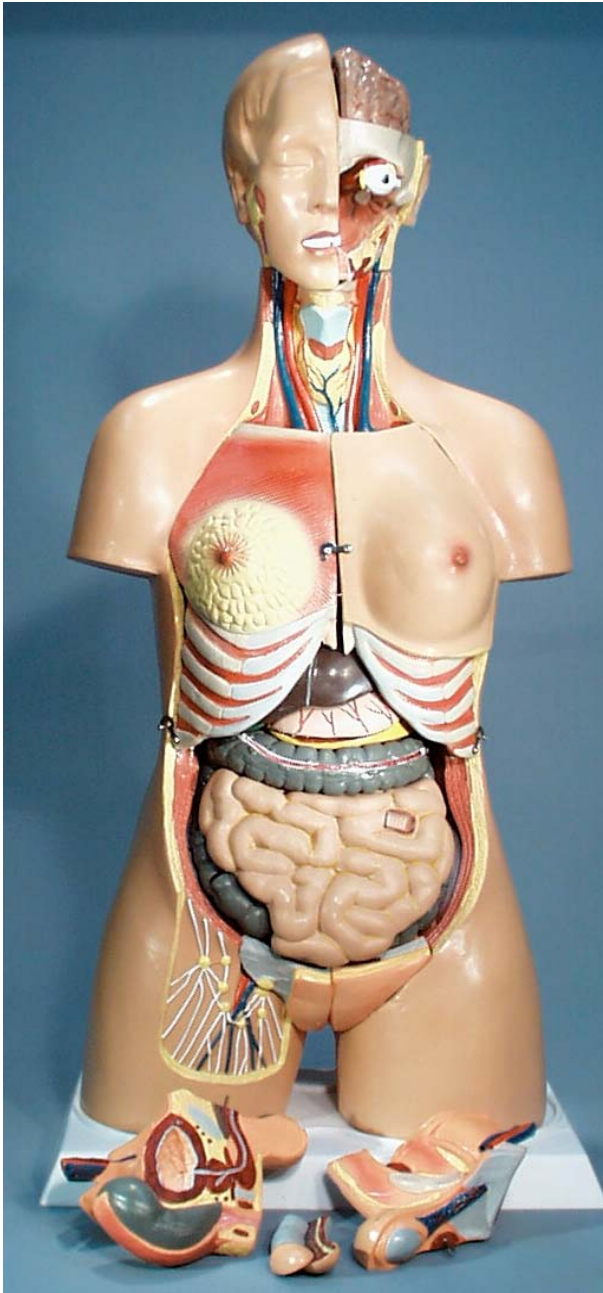


## **TORSO – male & female**

Cat: BI 1317-01

**DESCRIPTION:** An excellent, strong and resilient torso standing 850mm high, brilliantly coloured and consisting of 26 separate pieces. This model is beautifully detailed and can be fitted with either male or female genitalia. Organs are located with strong and accurate metal pins for maximum strength and very long life in the hands of students.

### **BI 1317-01 Torso - human**



**Physical size: 850mm high 930x445x280mm LxWxH (packed) Weight: 11.5kg**

**TECHNOS Pty. Ltd.**

61-65 McClure St. Thornbury. 3071 Melbourne. Australia  
Tel: 61 (0)3 9497 2555 Fax: 61 (0)3 9497 2166

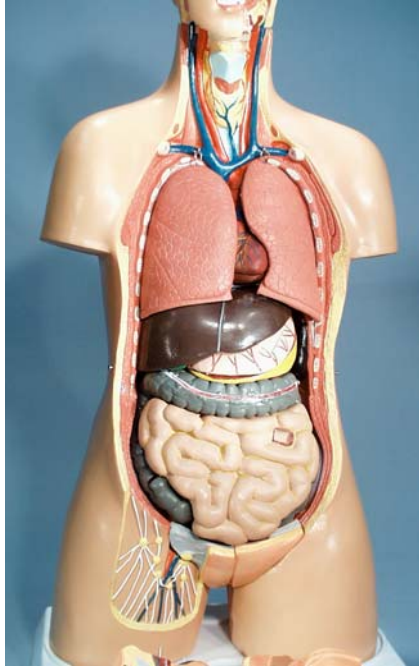
techtorso.doc

email: [technos@technos.com.au](mailto:technos@technos.com.au)

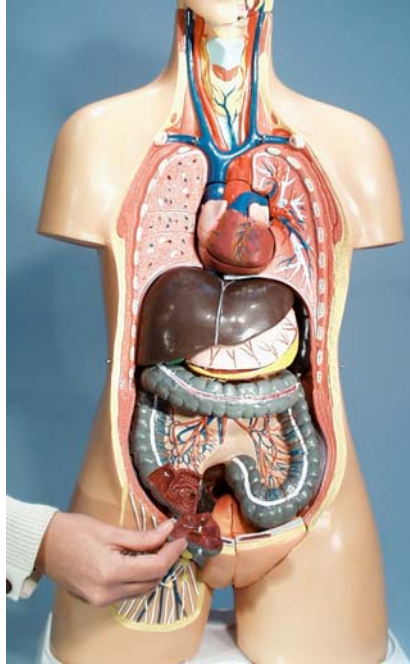
9-May-08

**IDENTIFICATION:** Traditional markings on the components parts of a model generally deface the product and, over time, they usually disappear with handling. The parts of the Technos model are identified by using the full colour identification sheets provided with the model and this method makes study more effective regarding the memorising of the various organs and their positions in the torso.

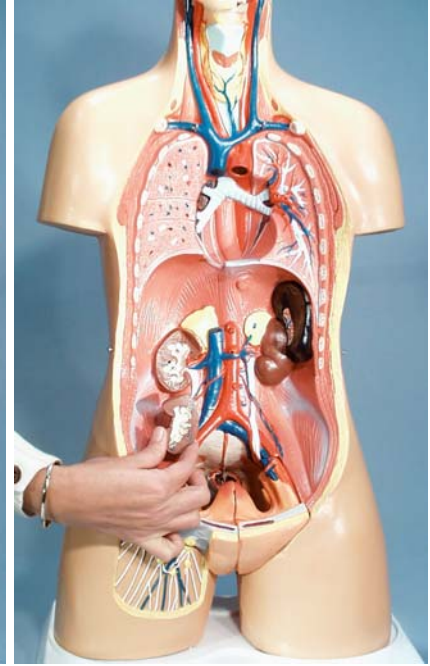
The images below provide an overview of the design of the organs and the manner in which they are mounted in the torso.



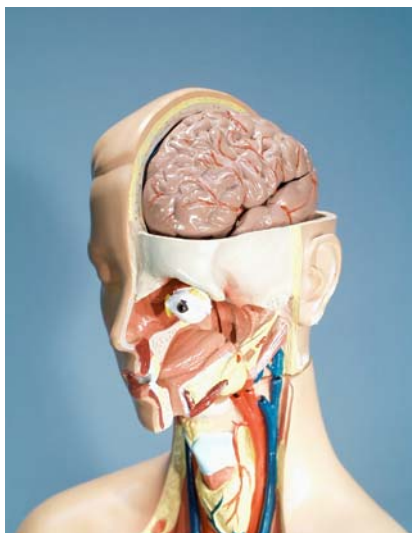
torso (female genitalia)  
with breasts removed



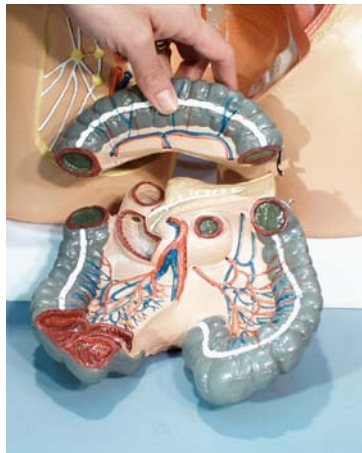
torso with the lungs and  
intestines removed



torso with the lungs, stomach,  
liver, heart & intestines removed



head with eye, tongue,  
throat and removable brain.



the various sections of  
the colon showing also  
the pancreas



stomach and sections of the  
brain showing lobes, glands,  
cerebellum & spinal cord.

